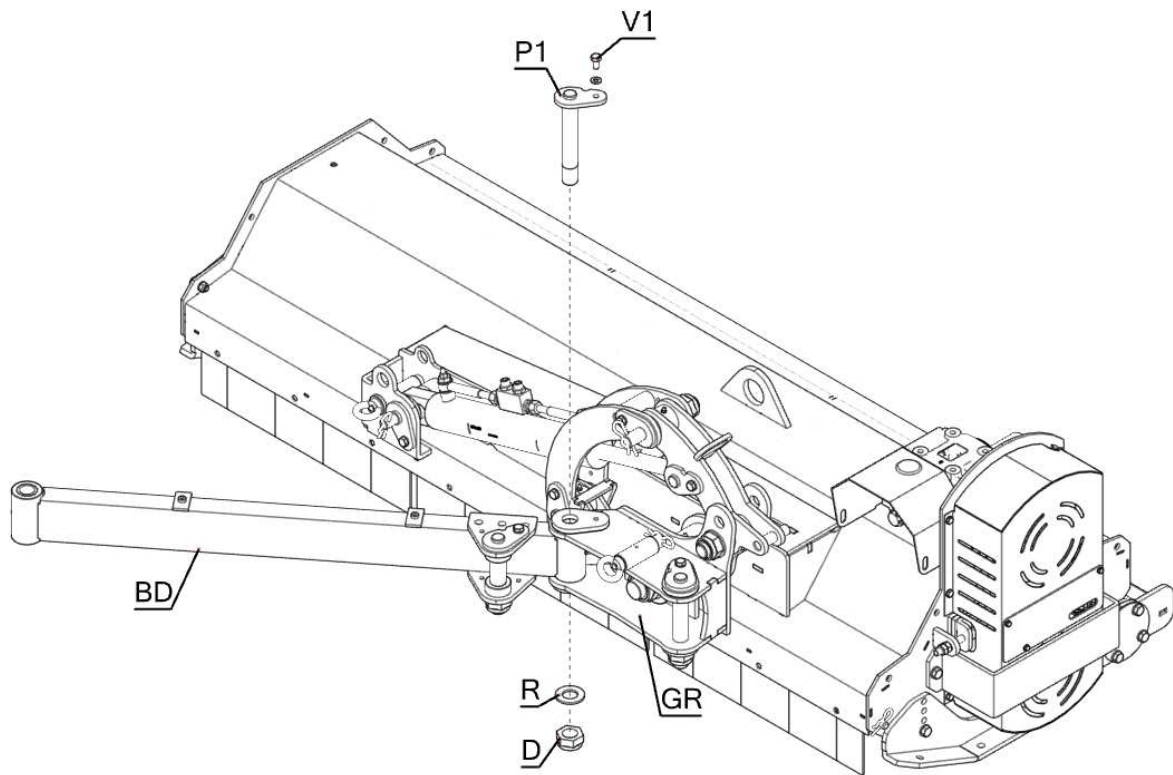
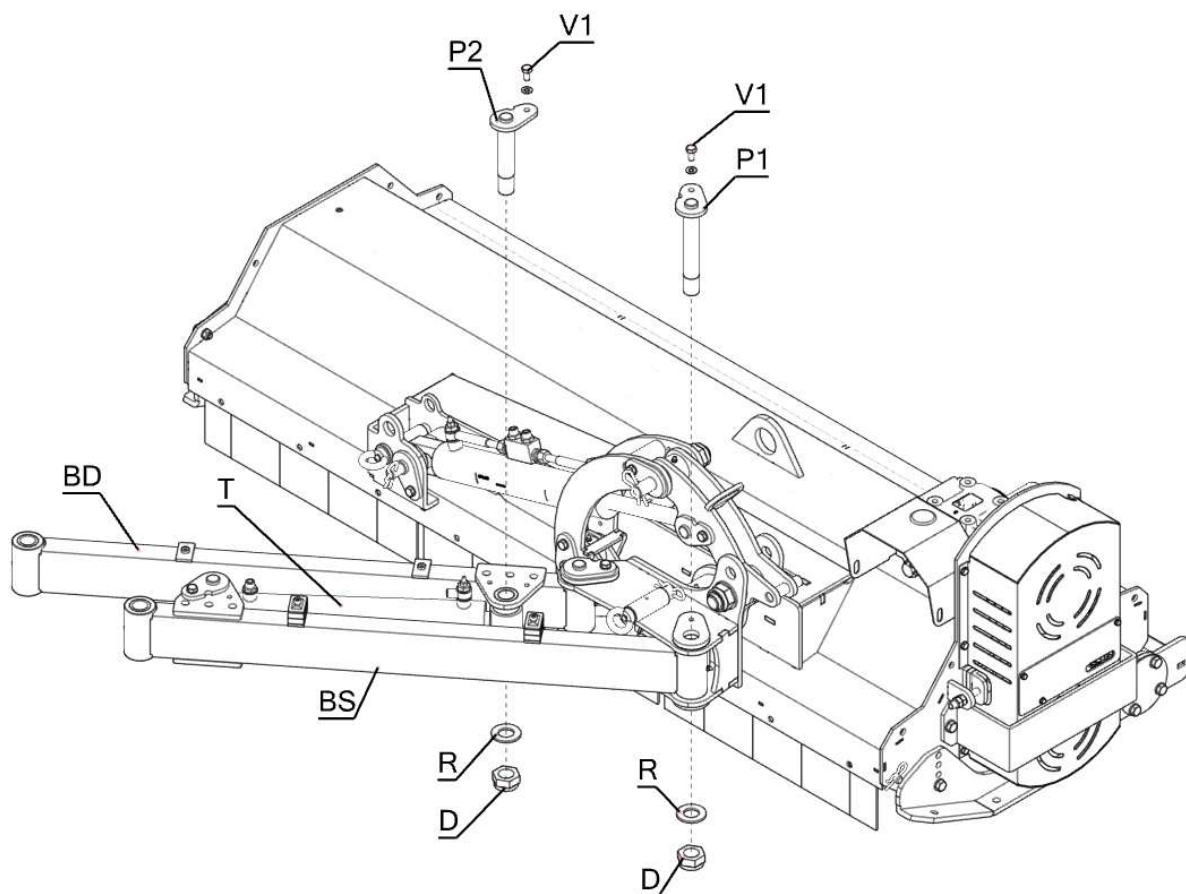


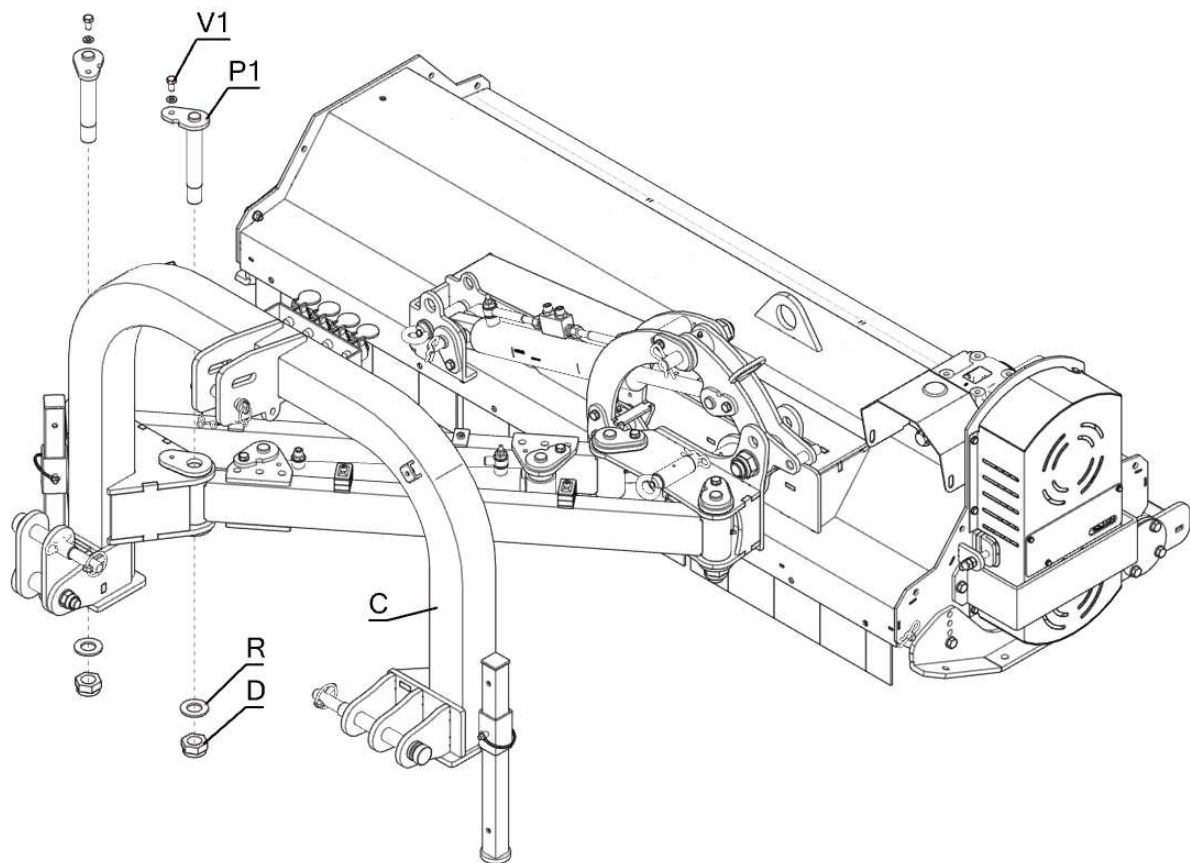
BEFORE USING THE MACHINE FOR THE FIRST TIME

3-POINT HITCH ASSEMBLY (OPTIONAL IN SOME COUNTRIES)

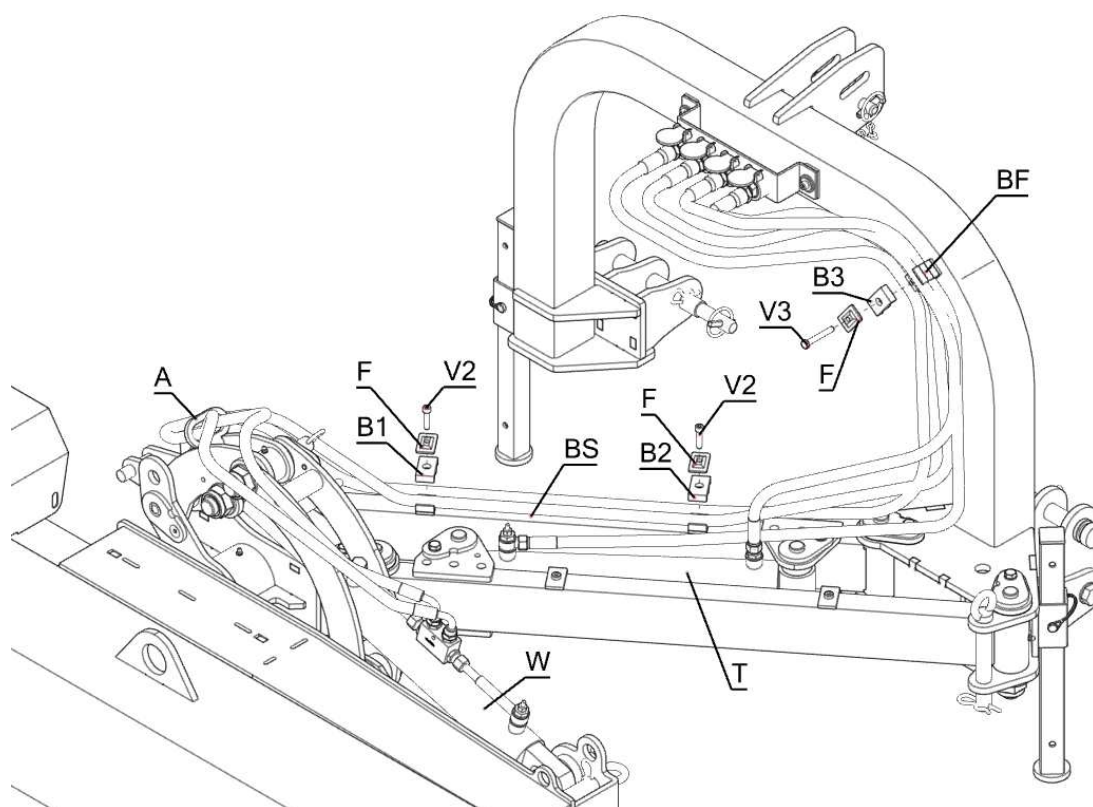
- 1) Mount the right arm "BD" in the rotation unit "GR" using the pin "P1", the washer "R" and the nut "D". Do not over-tighten it, the arm should rotate freely. Fix the pin in position with its screw "V1" ;



- 2) Fit the left arm "BS", with the translation cylinder "T", in the rotation unit using the pin "P1", the washer "R" and the nut "D". Do not over-tighten it, the arm should rotate freely. Fix the pin in position with its screw "V1" ;
- 3) Mount the cylinder rod in the right arm "BD" using the pin "P2", the washer "R" and the nut "D". Do not over-tighten it, the arm should rotate freely. Fix the pin using the screw "V1" ;



- 4) Mount the hitch "C" on the right and left arms using the two pins "P1", the two washers "R" and the two nuts "D". Do not over-tighten them, the arms should rotate freely. Fix the pins using the screw "V1"



5) Position the hoses as follows:

- a. Pass the hydraulic hose of the rotation cylinder "W" inside the slot "A", then in the block "B1" and in the block "B2". Tighten the hoses in the blocks using the locks "F" and the screws "V2";
- b. Pass the hydraulic hoses of the rotation cylinder "W" and the translation cylinder "T" inside the block "BF" and "B3". Tighten them into position using the lock "F" and the screw "V3".